



17A CENTRE ROAD Willows Riverside Park, Windsor, Buckinghamshire, SL4 5TU
Offers in excess of £450,000

 **HORLER**

17A CENTRE ROAD Willows Riverside Park, Windsor, Buckinghamshire, SL4 5TU

**** NO ONWARD CHAIN****

Offered to the market is a one of a kind, beautifully maintained unit sited on the tranquil park of Willows Riverside. The property offers two double rooms with the principle room offering a walk in wardrobe and a spacious ensuite, a spacious living room with bifold doors over with access onto the raised patio, an open plan kitchen dinner with fully fitted appliances. The property offer off street parking and a private rear garden.



Entrance

Through a UPVC front door into hall

Hall

With carpeted flooring, radiator and power points.

Kitchen / dining

A range of eye and base level white high gloss units and a complimentary work top, integrated gas hob and extractor above, integrated high level double oven and microwave. American style fridge freezer and dishwasher. inset 1&1/2 sink and recessed drainage.

A 6 seater wood dining table, chandelier lighting, radiator, power points and UPVC double doors leading to the garden.

Utility room

A range of units and cupboard space, integrated washing machine and a wall mounted Vaillant combi boiler.

Living room

With UPVC double doors to rear garden, in built electric fire, power points, vaulted ceilings, spotlights and carpeted flooring.

Bedroom

A double bedroom with, divan bed, fitted bedside draws and dressing table, carpeting flooring, vaulted ceilings, recessed spotlights and UPVC double glazed doors to rear patio

Ensuite

Fully tiled and under floor heated with a four piece suit including free standing bath and hand held attachment, walk in shower cubicle, vanity wash hand basin and low level W.C. Heated towel rail and shaver point.

Walk in closet

A range of full length and half hanging rails with shelving.

Bedroom two

A double bedroom, divan bed, 2x bedside draw units, radiator, vaulted ceilings, recessed spotlights and mirrored fitted wardrobes.

Bathroom

A side aspect UPVC double glazed frosted window,

double walk in shower cubicle, vanity wash hand basin and low level WC, tile walls and flooring with under floor heating .

Garden

A good size wrap around garden with a patio veranda and steps leading down to a lawn.

General information

Monthly site fees: Approx. 260.73 per month

Water and Sewage: Approx. £16.97 per month

FAMILY PARK

NO PETS ALLOWED

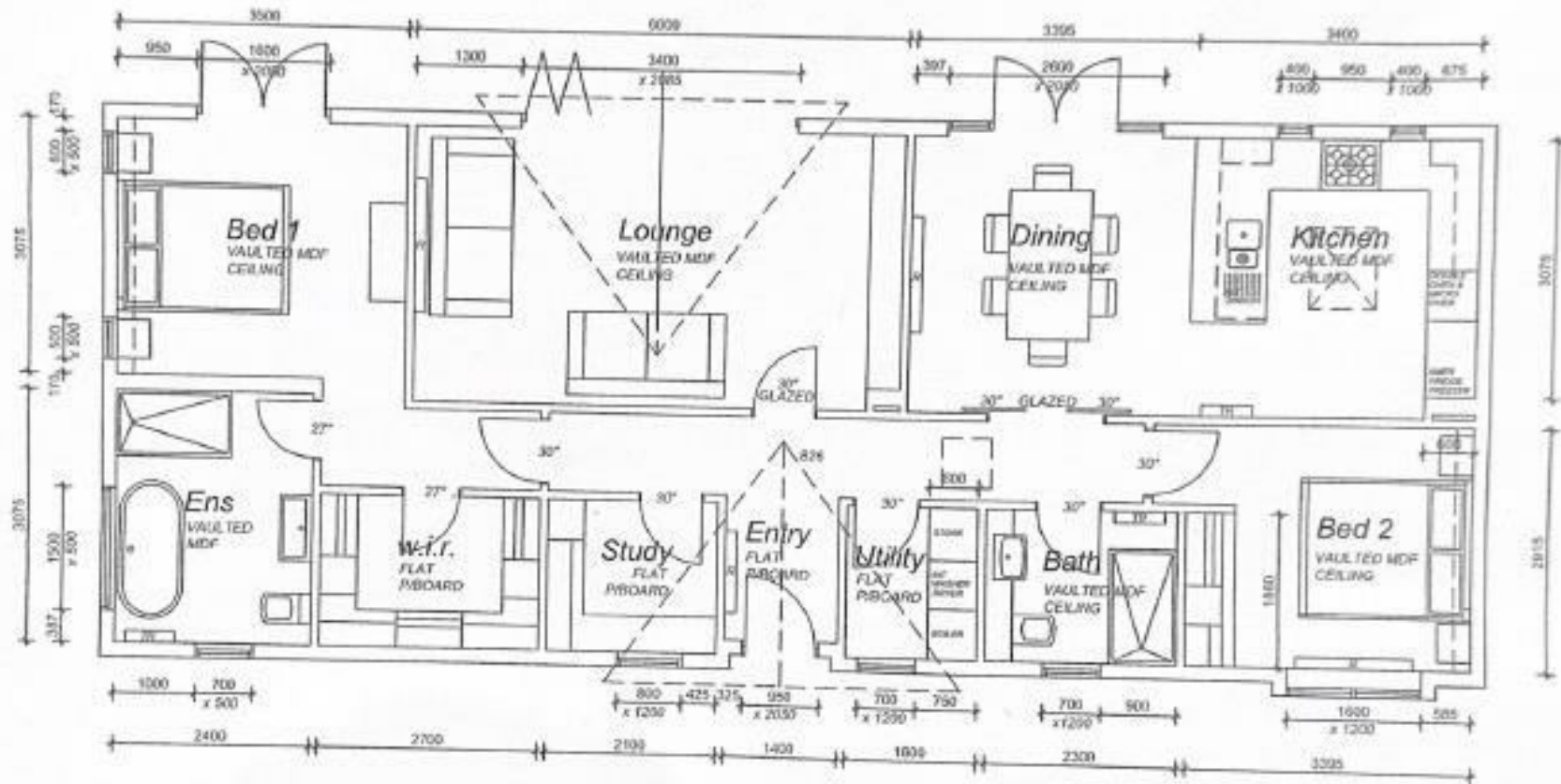
Council Tax Band 'A'

Legal note

Although these particulars are thought to be materially correct, their accuracy cannot be guaranteed and they do not form part of any contract.







17A CENTRE ROAD

REV	DATE	BY	DETAILS

MANUFACTURED BY:
OAKGROVE CABINS
 CARRAKEEL DRIVE
 MAYDOWN INDUSTRIAL ESTATE
 L'DERRY TEL: (028) 7188 1166



FOR:
Haulfryn - Willows Riverside

TITLE: 55x22ft FLOOR PLAN	
SCALE: NTS	SHEET 1 OF 3
DATE 10.06.22	DWG No. WR-55-01
DWG BY K+	REV -